

# Kenwood Crescent



Stunning extension providing desirable kitchen/dining/family space

Impressive remodelled feature ensuite to second floor 'Master'

Generous westerly rear garden, landscaped frontage

Five bedrooms, two ensuite, separate refitted family bathroom

Spacious accommodation over three levels

**£320,000**



Multi-Award Wining



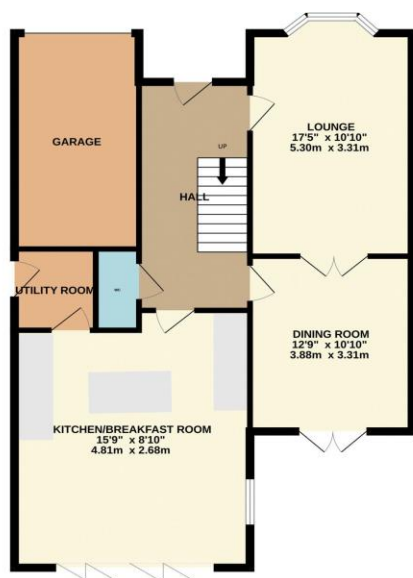


Extended, significantly upgraded and remodelled, this outstanding five bedroom property certainly merits early inspection to avoid disappointment, call Ingleby Homes on 01642 671025 to arrange your viewing.

A fabulous extended and refitted kitchen, and superbly remodelled and refitted ensuite are both features worthy of special mention, within this impressive home that delivers spacious accommodation over three generous levels. Externally, a landscaped frontage offers a re-laid block paved drive that approaches the integral garage, running alongside the established, low maintenance front garden, complimented by the generous rear garden that boasts a sunny, westerly aspect.

Internally, the extension has helped provide a stunning, open-plan kitchen/diner/family space, with bi-fold doors, refitted kitchen, feature island, integrated appliances and utility off. Adding to the entrance hall, cloakroom/WC, spacious bay-fronted lounge and separate dining room on the ground floor. The first floor brings four of the bedrooms, and the attractive refitted family bathroom. The second floor is home to a fantastic 'Master' suite, of bedroom with fitted robes, and adjoining, especially large, remodelled and stylish feature ensuite. Ingleby Homes recommended.

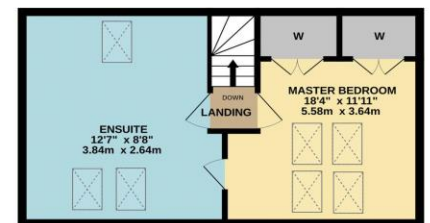
GROUND FLOOR



1ST FLOOR



2ND FLOOR



Whilst every attempt has been made to ensure the accuracy of the floorplan contained here, measurements of doors, windows, rooms and any other items are approximate and no responsibility is taken for any error, omission or mis-statement. This plan is for illustrative purposes only and should be used as such by any prospective purchaser. The services, systems and appliances shown have not been tested and no guarantee as to their operability or efficiency can be given.  
Made with Metropix ©2024



# “The Ingleby Barwick Experts”







Tenure: Freehold

Council Tax Band: F

EPC Rating: TBC



AGENTS NOTE: Every care has been taken with the preparation of these details, but they are for general guidance only. Measurements and dimensions are approximate, and any fixtures or fittings shown in photography does not infer that they are to be included within the sale. The agent has not tested any appliances or supplies and professional verification of these should be sought prior to purchase if required. These particulars do not constitute a contract or part of a contract.